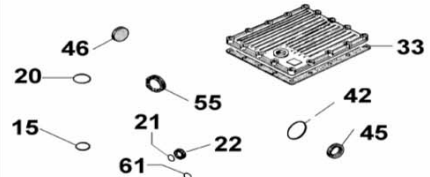
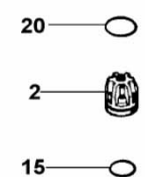
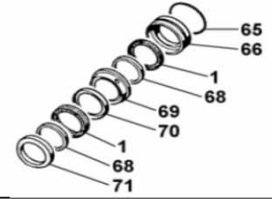
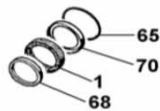


KIT 57

KIT 122

KIT 256

KIT 257



POS.	CODICE PART NO. REF.	DENOMINAZIONE - DESCRIPTION - DESCRIPTION	Q.TY
1-kit 57-122	802201002	"V" PACKING 45X60	12
2-kit 256	739824973	VALVES ASSEMBLY	12
3	803208502	O-RING DIA.2,62X37,77	2
4	835092502	NIPPLE G.1" 1/2-G.1" 3/4	2
5	803209602	O-RING DIA.2,62X47,3	2
6	852693532	CAP G3/4	2
7	803218002	O-RING DIA.3X22	2
8	760228092	HEAD	1
9	730416092	VALVES COVER	4
10	863910002	BOLT TCEI M12X40 UNI 5931	32
11	840595002	90° ELBOW TAIL DIA.40 MM.	2
12	844120002	BOLT TCEI M12X110 UNI 5931	12
13	803209602	O-RING DIA.2,62X47,3	2
14	852752002	PLUG 1"1/2	2
15-kit 257-256	803253002	O-RING DIA.3,53X34,52	12
16	730122512	VALVE SEAT	12
17	730123682	POPPET	12
18	730118512	SPRING	12
19	730129322	VALVE CAGE	12
20-kit 257-256	803270002	O-RING DIA.3,53X49,2	12
21-kit 257	803217302	O-RING DIA.3X16	4
22-kit 257	802089002	OIL SEAL	2
23	801160002	SNAP RING	2
24	760056822	HEADS CONNECTION PIPE	1
25	760300082	PUMP CRANKCASE	1
26	806585002	TAB 10X8X55 (VR.PP)	1
27	801264002	SNAP RING (VR.PP)	1
28	760027262	CRANKSHAFT (CK 220 PP)	1
28	730037262	CRANKSHAFT (CK 230 PP)	1
28	730319262	CRANKSHAFT (CK 180 PP)	1
29	730032262	CRANKSHAFT (CK 220 P)	1
29	730030262	CRANKSHAFT (CK 146 P)	1
30	862216002	BOLT M6X25	16
31	853519002	OIL FILLING PLUG	1
32	760002092	CRANKCASE COVER	1
33-kit 257	760065722	GASKET	1
34	861930002	BOLT T.C.E.I. M5X12	12
35	843651502	WASHER DIA.5,3X9X0,9	12
36	760046612	FORK	6
37/1	760010092	CONROD	6
37/2 opt.	760014112	BRONZE CONROD (OPTIONAL)	6
38	760047762	RING	6
40	760227092	HEAD	1
41	812859002	CONICAL ROLLER BEARING DIA.35X72X24,25	2

POS.	CODICE PART NO. REF.	DENOMINAZIONE - DESCRIPTION - DESCRIPTION	Q.TY
42-kit 257	803290002	O-RING DIA.3,53x85,32	2
43/1	730061652	SHIM	1
43/2	730006052	SHIM	1
44	730003092	COVER	2
45-kit 257	802143002	OIL SEAL	2
46-kit 257	802099602	CAP (VR.PP)	1
47	863696002	BOLT TCEI M12X25	8
48	852579002	PLUG G 3/8	1
49	824109002	GASKET DIA.17X22X1	1
50	853515002	OIL SIGHT GLASS	1
51	730024612	MOUNTING BRACKET	2
52	843906002	WASHER	4
53	863740002	BOLT M12X30 UNI 5739	4
54	804465002	ANTIFRICTION BUSH DIA.40X44X50	6
55-kit 59-257	802180002	OIL SEAL DIA.40X55X7	6
56	852007302	PISTON PIN	6
57	730080092	PLUNGER ROD	6
58	730056532	SPACER	12
59	844301002	WASHER DIA.25,3X50X1	6
60	730010182	CERAMIC PISTON DIA.45	6
61-kit 257	803195502	O-RING DIA.2,62X20,24	6
62	863900002	BOLT M12X40 (FROM 05/14)	6
63	730342512	PLUG (FROM 05/14)	6
65-kit 57-122	803283002	O-RING DIA.3,53X58,74	6
66-kit 122	730070532	BACK GLAND	2
67	820095002	WING NUT G1" 3/4	6
68-kit 57-122	730044322	THRUST RING	12
69-kit 122	730058532	FRONT GLAND	6
70-kit 57-122	730040322	ANTIEXTRUSION RING	6
71-kit 122	730039532	SPACER	6
72 opt.	311482322	PLAIN SAFETY CONE	1
73 opt.	843696002	WASHER DIA.8,4x18x2	2
74	842475002	SCREW	2
75	73001109A	PLUNGER ROD + PISTON PIN KIT	6
76	800040002	SNAP RING	12
77	730503322	OIL SEAL SPACER (FROM 09/13)	6
REPAIR KIT	ITEM NO.s INCLUDED	PCS.	
kit 57	739845973	SPARE PARTS KIT	
kit 59	769812973	SPARE PARTS KIT	
kit 257	769854973	SPARE PARTS KIT	
kit 256	769853973	SPARE PARTS KIT	
kit 122	769835973	SPARE PARTS KIT	